

Walsh Tundra

6000 Series Vinyl Window & Door Systems

6000 Series

Tilt Double Hung

Horizontal Slider

Basement Hopper

Awning and

Casement

Bay and Bow

Windows

Frame and Glass

Options

Geometric Shapes

available



MANUFACTURED
IN MINNESOTA

SINCE
1945

6000 Tilt Double Hung

Walsh Tundra
6000 Series Vinyl Window & Door Systems

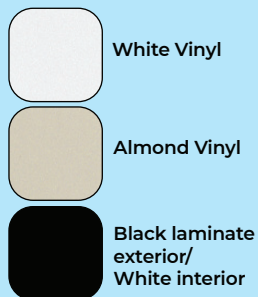


6000 Features

- ▶ Fusion welded frame and sash.
- ▶ Operable sashes tilt in for easy cleaning from inside your home.
- ▶ Constant force balancers for ease of operation.
- ▶ Low profile hardware for less obstructed viewing area.
- ▶ Uninterrupted meeting rail interlock for additional energy efficiency.
- ▶ One-piece sill with water diverting channel.
- ▶ Full-length balance covers on double hungs improves aesthetics.
- ▶ Dual-fold extruded lift rail for strength and beauty.
- ▶ Integral vent (night) latches for safety and ventilation.

Color Options

Standard Interior/Exterior Vinyl



Standard Exterior Painted Colors



Standard Interior Woodgrain Laminates



Due to the limitations of the printing process colors shown may vary. Please call for actual color samples if needed.

6100 Horizontal Slider

Walsh Tundra
6000 Series Vinyl Window & Door Systems

6100 Features

- ▶ Fusion welded frame and sash.
- ▶ Full complement of accessory profiles.
- ▶ 3¹/₄" frame width.
- ▶ Brass rollers for enhanced operation.
- ▶ Optimum designed aluminum sash reinforcement.
- ▶ Multi chambered vinyl profiles for thermal efficiency.
- ▶ Dual weatherstripping.
- ▶ Interlocks designed for ease of operation and positive engagement.
- ▶ Both panels lift out for cleaning.
- ▶ Integral vent (night) latch for safety and ventilation.



Color Options

Standard Interior/Exterior Vinyl



Standard Exterior Painted Colors



Standard Interior Woodgrain Laminates



Due to the limitations of the printing process colors shown may vary. Please call for actual color samples if needed.

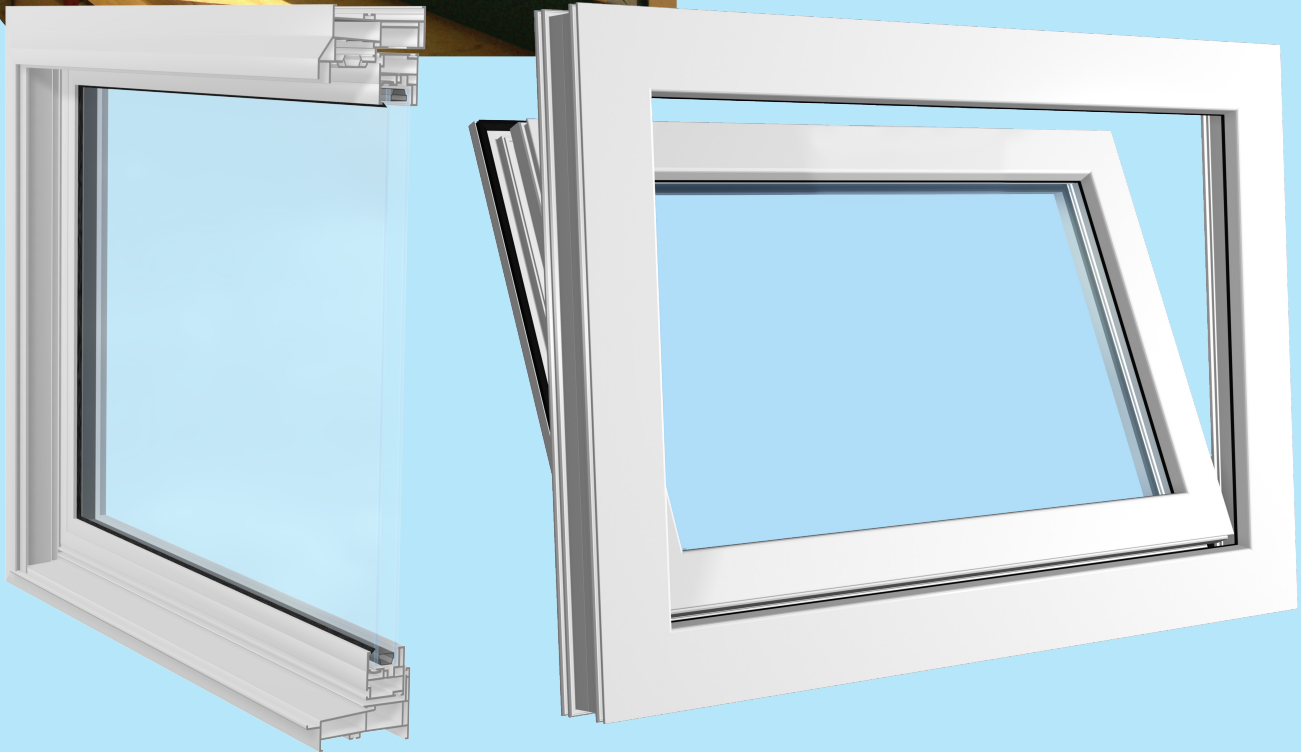
6400 Hopper

Walsh Tundra
6000 Series Vinyl Window & Door Systems



6400 Features

- ▶ Fusion welded frame and sash.
- ▶ Lowest cost operating window.
- ▶ Sash pulls into home, hinged on bottom.
- ▶ Simple turn handle lock for easy operation.
- ▶ Hinges unsnap so glass can be cleaned from inside your home.
- ▶ Custom sized to the 1/8", minimal height of 12".

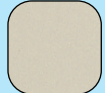


Color Options

Standard Interior/Exterior Vinyl



White Vinyl

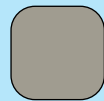


Almond Vinyl

Standard Exterior Painted Colors



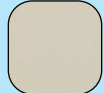
White



Sierra
83



Brick Red
120



Almond
727



Terratone
169



Royal Brown
24



Bronze
21



Black
09



Woodland
Green
522

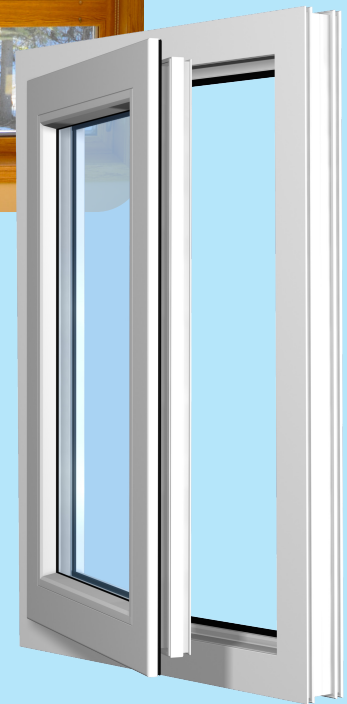
Due to the limitations of the printing process colors shown may vary.

Please call for actual color samples if needed.

6500 Awning

6600 Casement

Walsh Tundra
6000 Series Vinyl Window & Door Systems



6500 / 6600 Features

- ▶ Fusion welded frame and sash.
- ▶ Hardware finished with E-Guard protective coating.
- ▶ Multiple-point locking for extra security.
- ▶ Single lock throw (casement) for easy operation.
- ▶ All operators rated for commercial use.
- ▶ Egress hardware at no extra charge.
- ▶ Casement sash extends to full 90 degrees for cleaning and ventilation.

Color Options

Standard Interior/Exterior Vinyl



Standard Exterior Painted Colors



Standard Interior Woodgrain Laminates



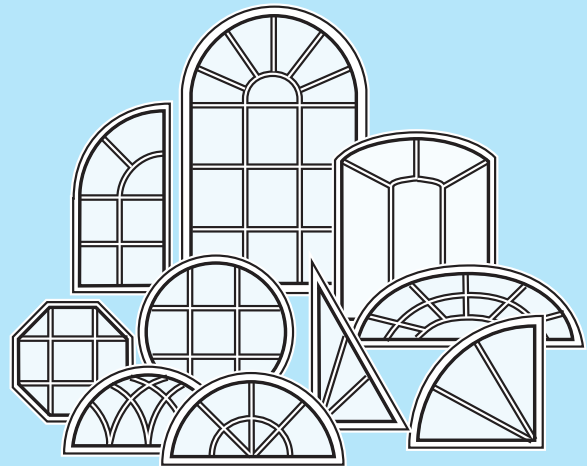
Due to the limitations of the printing process colors shown may vary. Please call for actual color samples if needed.

Bay & Bow Windows

Geometric Configurations



Walsh Tundra
6000 Series Vinyl Window & Door Systems



- ▶ 1/4" laminated plywood head, seat and jambs.
- ▶ R7 insulated seatboard is standard.
- ▶ Optional lighting in either plug in or hard-wired applications.
- ▶ Optional custom built roofs in plywood, painted aluminum or copper for a beautiful home in less time.
- ▶ Optional 1/2" thick solid surface seat boards create a durable and waterproof seat board.
- ▶ Opt for the attractive laminates for no maintenance or prefinishing on the real wood head, seat and jamb. Choose from four options: one white and three woodgrains.

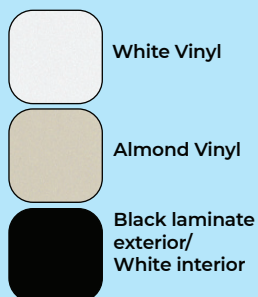
Some typical examples of architectural window shapes, selection is not limited to samples shown here.

Contact your sales representative for complete product offering.



Color Options

Standard Interior/Exterior Vinyl



Standard Exterior Painted Colors



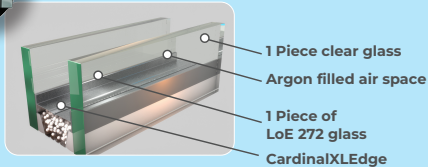
Standard Interior Woodgrain Laminates



Due to the limitations of the printing process colors shown may vary. Please call for actual color samples if needed.

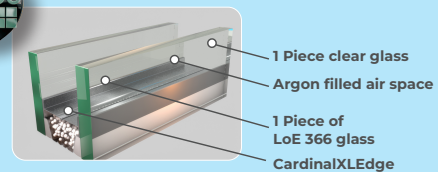
Tundra Thermal Performance Options

We know that there are those who demand even better performance. For those who want to save even more on heating and cooling bills, Walsh Tundra Windows and Doors offers these optional performance upgrades.



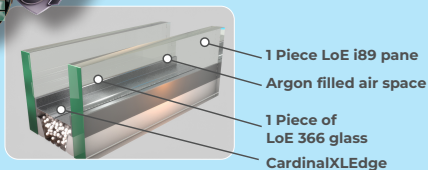
Thermal Package #1

- ▶ Dual pane insulated unit consisting of one LoE 272 and one clear pane with Cardinal XLEdge spacer and argon fill.
- ▶ Increased condensation resistance.
- ▶ Increased inside glass temperature.
- ▶ Save on heating and cooling costs.



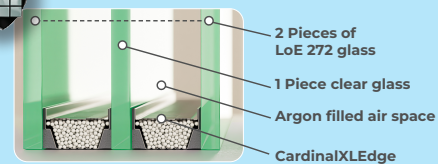
Thermal Package #2

- ▶ Dual pane insulated unit consisting of one LoE 366 and one clear pane with Cardinal XLEdge spacer and argon fill.
- ▶ High performance glass.
- ▶ Less solar heat gain lowers cooling costs.
- ▶ Cuts fading transmission.



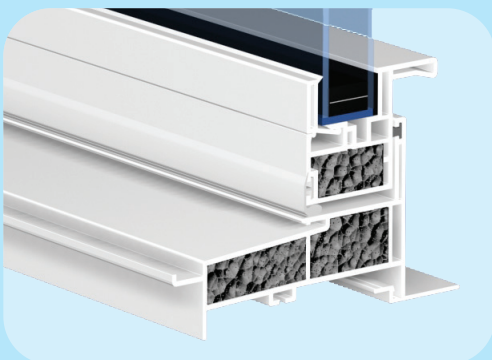
Thermal Package #3

- ▶ Dual pane insulated unit consisting of one LoE 366 and one LoE i89 pane with Cardinal XLEdge spacer and argon fill.
- ▶ Triple pane performance in a dual pane window.
- ▶ Solar heat gain coefficient unaffected like triple glazing.
- ▶ 15% better U-value than Package #1.
- ▶ Room side coating reflects heat back into the living space for better comfort.



Thermal Package #4

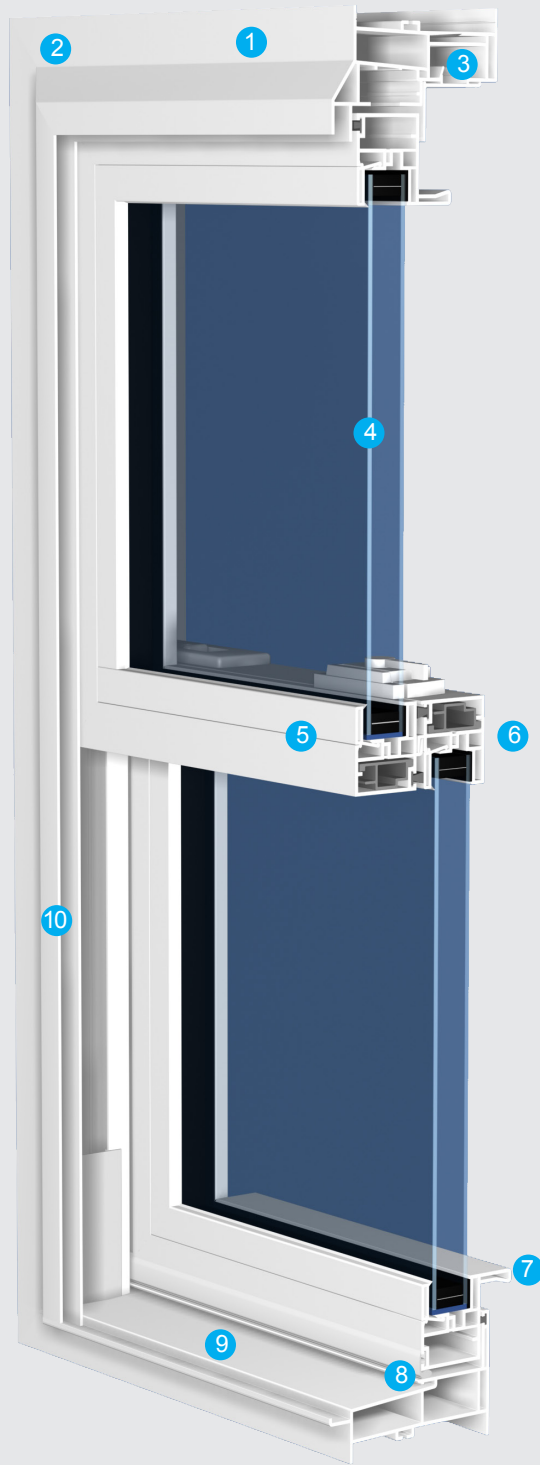
- ▶ 1" overall thick triple pane insulated unit consisting of two LoE 272 and one clear pane with Cardinal XLEdge spacer and argon fill.
- ▶ Two Cardinal XLEdge spacers.
- ▶ Two argon dead air spaces.
- ▶ 32% better insulating performance than Package #1.
- ▶ Better noise reduction over dual pane glazing options.



Foam Fill Sash and Frame

- ▶ Neopor® insulates even better than dead air space. Up to 8% more!
- ▶ Unlike spray foam, Neopor® does not give off gas volatile organic compounds (VOC's). In fact, it is GreenGuard certified for indoor air quality.
- ▶ Unlike spray foam Neopor® doesn't shrink over time.
- ▶ No hidden air pockets in the foam to cut down your insulating value.
- ▶ R value of Neopor® actually increases as temperature decreases.

Precision Engineered



1. Solid vinyl color throughout keeps windows fresh and new looking – won't chip, peel, crack or warp.
2. Fusion welded frame and sash for added structural integrity.
3. Airtight insulating chambers that enhance thermal efficiency.
4. Insulated LoE 272 glass unit with argon fill provides year-round comfort and energy savings. Other glass options are available.
5. Full-length interlock at sash meeting rails offers increased insulation, comfort and security.
6. Metal reinforcement at meeting rails adds strength and allows for secure mounting of hardware.
7. Dual fold integral liftrails for improved aesthetics and superior strength.
8. Compression bulb seal at the sill creates an allseason weather barrier.
9. One-piece sloped sill for classic beauty, easy cleaning and prevention of water accumulation
10. Integral screen track creates a clean-line.

Additional Features

- ▶ Fusion-welded sash and main frame for superior strength and rigidity.
- ▶ Dual-ventilator locks for limited and secure opening of the window for ventilation.
- ▶ Full balance covers for reduced air infiltration while adding a finished look to the window frame.
- ▶ Constant force balance system for smooth operation of sashes.
- ▶ Tilt-in top and bottom sashes for safe and easy cleaning from inside the home.
- ▶ Triple-barrier fin seal weather-stripping between the sash and jamb helps block out water, air and dirt infiltration.
- ▶ Half screens are standard; optional full screens available.

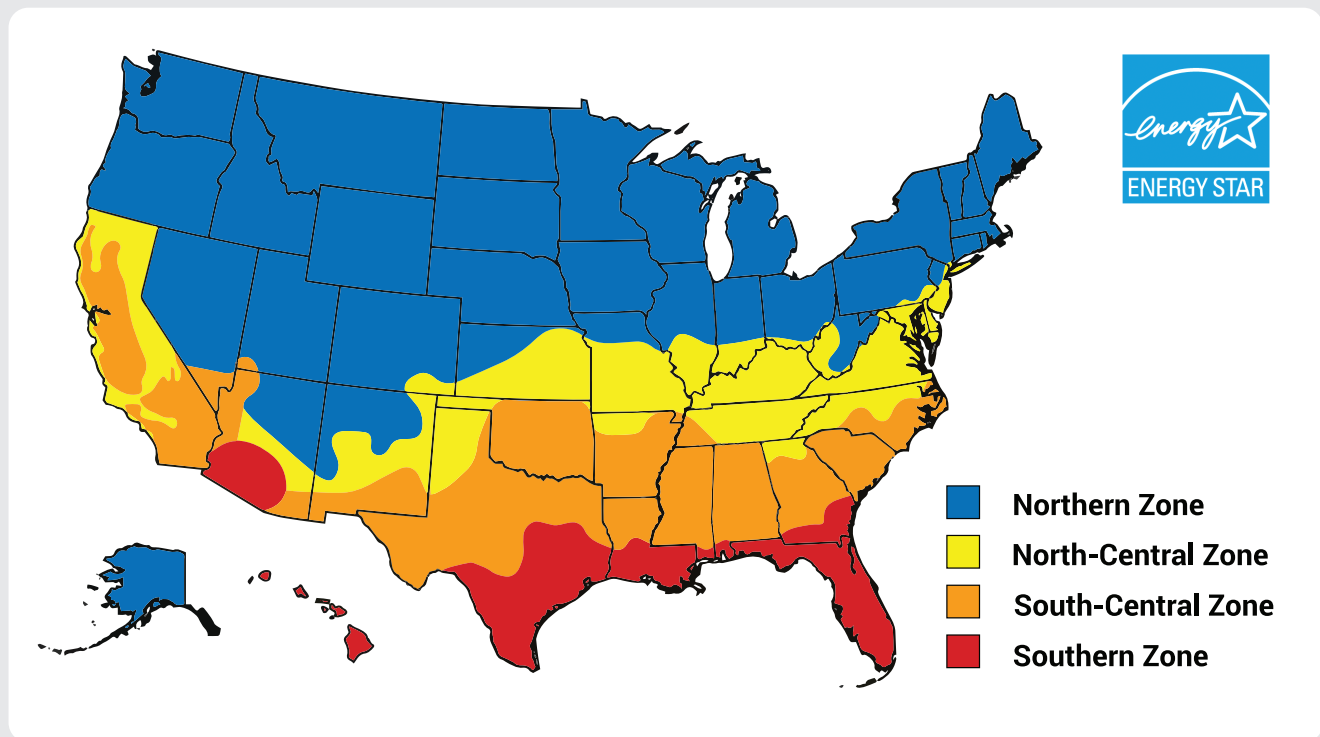
Tundra Standard Features

For more than 70 years, Walsh has been building windows with only one philosophy: only the best will do. Therefore, only the finest components help make Tundra windows by Walsh a cut above the competition.

Cardinal LoE 272 Glass standard in all windows (Other higher performance Glass Options available.)

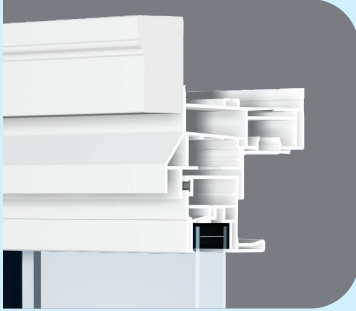
- ▶ Year-round performance and comfort
- ▶ Better U-value for lower heating costs in the winter
- ▶ Less solar heat gain for lower cooling costs in summer
- ▶ Cuts transmission of damaging UV rays into the house

Energy Star Climate Region Map gives you clear guidelines for determining which windows and doors will help reduce heating and cooling costs in your region - and your home.

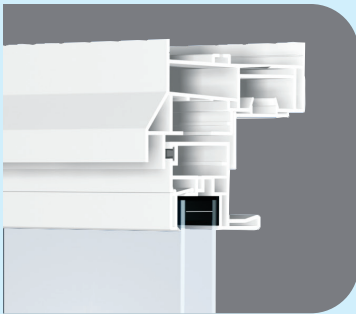


Tundra Frame Options

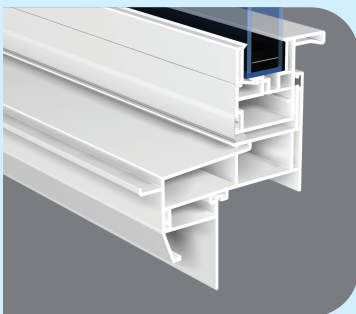
Vinyl Frame Options



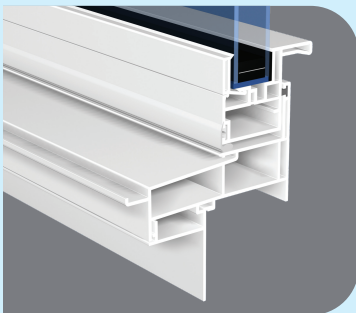
Tundra with brickmold
(with or without sill nosing)



Tundra replacement window



Tundra with J-Channel



Tundra prime window with nail fin

Color Options

Walsh Tundra windows come in two extruded color options, nine painted exterior options and five interior color options. Our paint is water based instead of solvent based and it is as tough as it is stylish. To prove that, it is backed by an industry best 20-year limited warrant on vinyl an 15 years on paint & laminates.

* Due to the limitations of the printing process, color samples shown here may not be exact; consult your representative prior to ordering.

Standard Interior/Exterior Vinyl



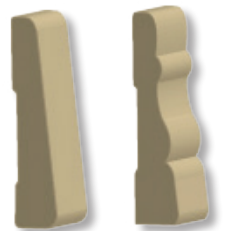
Standard Exterior Painted Colors



Standard Interior Woodgrain Laminates



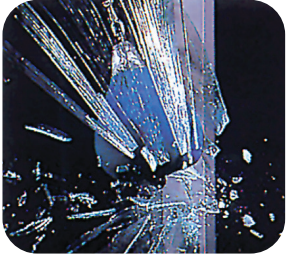
Jamb Extensions



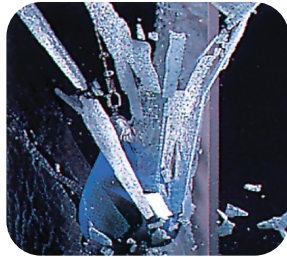
Jamb extensions come factory applied. They are available in any wall depth up to 10-1/4". Choose from maintenance-free vinyl wrapped, Oak prefinished to match, Pine or Maple prefinished clear, or any of these wood species unfinished so you can express your own style.

Tundra Glass Options

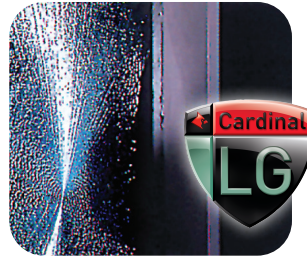
Glass Types



Annealed Glass when broken will produce long, sharp splinters.



Tempered Glass shatters completely under higher levels of impact energy, and few pieces remain in the frame.



Laminated Glass may crack under pressure, but tends to remain integral, adhering to the plastic vinyl interlayer.

Tundra Frame Options

Between the Glass Grids

Grid Patterns



Colonial



Vertical



Sash Perimeter



Window Perimeter

Grid Profiles

Grids available in all woodgrain colors



Contour White



Contour Almond



Flat White



Flat Almond



Light Oak



Dark Oak



Cherry

Between the Glass Blinds

BTG installation eliminates dusting and prevents damage during daily use. Tilting or raising blinds to optimal level controls brightness, privacy, UV damage to furniture, fabrics and floors.



Blinds available in 6 colors in most products. Ask your sales rep for availability. LoE glass with argon fill standard with this blind glass package.



The moveable finger slide device makes adjusting the slats convenient and simple. The SSLT magnetic coupling lifts and tilts the mini-blind within the sealed insulated glass unit.



Tilt operator rotates blind slats open and closed.



The lift operator will raise or lower the blinds.

Walsh Tundra

6000 Series Vinyl Window & Door Systems

Walsh Tundra Window Performance Chart

Tundra Performance Level/U. Values

		U VALUE	SHGC	VISIBLE TRANSMITTANCE	CONDENSATION RESISTANCE
6000 Double Hung	No Foam Tundra 1	0.31	0.31	0.54	55
	Foam Tundra 1	0.30	0.31	0.54	56
	No Foam Tundra 2	0.30	0.21	0.49	56
	Foam Tundra 2	0.29	0.21	0.49	56
	No Foam Tundra 3	0.27	0.20	0.47	45
	Foam Tundra 3	0.25	0.20	0.47	45
	No Foam Tundra 4	0.22	0.27	0.43	66
	Foam Tundra 4	0.21	0.27	0.43	68
6100 Horizontal Slider	No Foam Tundra 1	0.31	0.31	0.54	56
	Foam Tundra 1	0.30	0.31	0.54	56
	No Foam Tundra 2	0.31	0.20	0.48	57
	Foam Tundra 2	0.29	0.20	0.48	57
	No Foam Tundra 3	0.27	0.20	0.47	46
	Foam Tundra 3	0.25	0.20	0.47	46
	No Foam Tundra 4	0.22	0.27	0.43	66
	Foam Tundra 4	0.21	0.27	0.43	68
6300 DH PW	No Foam Tundra 1	0.28	0.42	0.60	61
	Foam Tundra 1	0.27	0.42	0.60	62
	No Foam Tundra 2	0.27	0.33	0.54	60
	Foam Tundra 2	0.27	0.23	0.54	60
	No Foam Tundra 3	0.23	0.22	0.53	47
	Foam Tundra 3	0.22	0.22	0.53	47
	No Foam Tundra 4	0.20	0.29	0.48	69
	Foam Tundra 4	0.18	0.30	0.48	72
6400 Basement Hopper	No Foam Tundra 1	0.31	0.28	0.49	60
	No Foam Tundra 2	0.30	0.19	0.44	61
	No Foam Tundra 3	0.27	0.18	0.42	49
	No Foam Tundra 4	0.23	0.24	0.39	64
6500 Awning	No Foam Tundra 1	0.29	0.27	0.47	56
	Foam Tundra 1	0.27	0.27	0.47	57
	No Foam Tundra 2	0.28	0.18	0.42	57
	Foam Tundra 2	0.26	0.18	0.42	57
	No Foam Tundra 3	0.25	0.18	0.41	45
	Foam Tundra 3	0.23	0.18	0.41	45
	No Foam Tundra 4	0.22	0.23	0.37	69
	Foam Tundra 4	0.21	0.23	0.37	70
6600 Casement	No Foam Tundra 1	0.29	0.27	0.47	60
	Foam Tundra 1	0.27	0.27	0.47	60
	No Foam Tundra 2	0.28	0.18	0.42	60
	Foam Tundra 2	0.26	0.18	0.42	61
	No Foam Tundra 3	0.25	0.18	0.41	48
	Foam Tundra 3	0.23	0.18	0.41	48
	No Foam Tundra 4	0.23	0.23	0.37	68
	Foam Tundra 4	0.20	0.23	0.37	69
6700 CSMT PW	No Foam Tundra 1	0.28	0.32	0.55	60
	Foam Tundra 1	0.27	0.32	0.55	61
	No Foam Tundra 2	0.27	0.21	0.50	60
	Foam Tundra 2	0.26	0.21	0.50	61
	No Foam Tundra 3	0.23	0.21	0.49	50
	Foam Tundra 3	0.22	0.21	0.49	49
	No Foam Tundra 4	0.21	0.28	0.44	68
	Foam Tundra 4	0.19	0.28	0.44	69
6800 Patio Door	No Foam Tundra 1	0.29	0.35	0.60	61
	Foam Tundra 1	0.28	0.35	0.60	61
	No Foam Tundra 2	0.28	0.23	0.54	61
	Foam Tundra 2	0.27	0.23	0.54	61
	No Foam Tundra 3	0.23	0.22	0.53	50
	Foam Tundra 3	0.22	0.22	0.53	50
	No Foam Tundra 4	0.21	0.30	0.48	67
	Foam Tundra 4	0.20	0.30	0.48	68

*All U-values are independently tested by a third party

**All U-Values are without grids



Our fabrication partners



Your Tundra Dealer is: